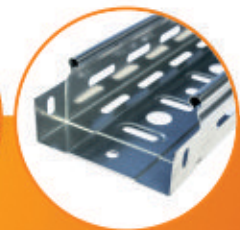
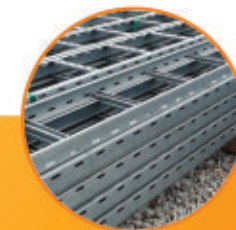


AN
INNOVATIVE
TRENDSETTER



performance beyond
your expectations

JETCOTECH ENGINEERING LLP

Opp. Old Pipli Bus-Station, Jetpar Road,
Morbi-363642, Gujarat, India

m | +91 75750 07114
e | jetcotechengineeringllp@gmail.com

 www.jetcotech.in



Profile

We Jetco Industries, since 2009 introduce ourselves as a leading manufacturer of electrical panels, located at Morbi & Ahmedabad with 100% in-house facilities. We at Jetco Industries believe in co-operation, friendly and pleasant working atmosphere. Jetco Industries thankful to valuable customer for our success.

Now we Jetco Industries introduce our new venture Jetcotech Engineering LLP manufacturing unit of wide range of cable tray, lighting poles, high mast and galvanizing plant.

Jetcotech is trying to build up our company on the rock of faith in today's competitive market. We cordially expect your kind co-operation in achieving our milestone. We dedicate ourselves in supplying wide range of cable tray, poles and galvanizing coating service.

Our main target is to catering best services to our esteemed customers in the field of industrial and commercial by way of providing solutions in cable management.

We are fired by the passion to push the limits of engineering products like, cable trays, lighting poles, high mast and galvanizing of any type of metals. Our technical team consists of trained & motivated engineers & technician to cater all sorts of before & after sales backup.

Jetcotech is with a culture of excellence and orientation towards growth, the company is positioned to win the future. Jetcotech is proactive, progressive and has been steadily improving its competitive advantage.

SAFE

Environment, Health and Safety Issues are priority areas at Jetcotech. In keeping with pollution control and carbon emission standards we have taken up appropriate initiatives and are pursuing alternatives to implement a green policy.

STRENGTH

Jetcotech will try to meet the divergent needs of clients & delight them by systematically supplying a rapid response to their need. The above shall be achieved by launching a Quality Management Systems through participation of our entire team & vendors. It shall be our endeavor to continually improve the quality of our services and products to match the best & latest in the industry.

SPEED

Each phase of design, fabrication and delivery is planned and seamlessly carried out to ensure that customers receive the highest quality products. To ensure that Jetcotech products reach you on time strategically located Jetcotech regional distribution centers delivery to every state and job site in the subcontinent, quickly and efficiently.

OUR PRODUCT RANGE...

LADDER CABLE TRAY | PERFORATED CABLE TRAY | WIRE MESH CABLE TRAY

POLYGONAL / OCTAGONAL LIGHTING POLES | SWAGED POLES

LIGHTING HIGH MAST POLES | FLAG MAST POLES | HOT DIP GALVANIZING

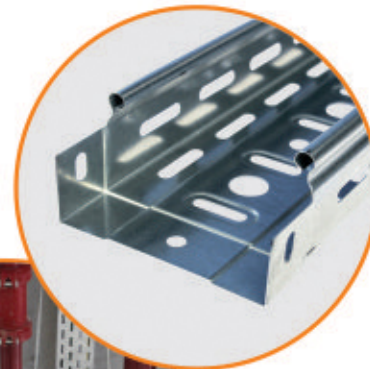
PERFORATED CABLE TRAY & ACCESSORIES

We are pleased to introduce ourselves as one of the leading manufacturer, exporter and supplier of Perforated Cable Tray with optimum quality. Our provided cable trays are highly acclaimed in the market for supporting different types of insulated cables. Further, these cable trays are manufactured using quality approved raw material and progressive technology in the supervision of our skilled professionals. Owing to their various quality attributes, these trays are widely accepted by our clients. We full feel requirement for various industries such as Ceramic industries, Chemical industries, Steel & Power Plant, Cement Plant, Sugar Industries and Ship Building etc. Perforated cable trays are made for Easy Installations, Instant approach for repairs and replacement of cables.

Product Range :

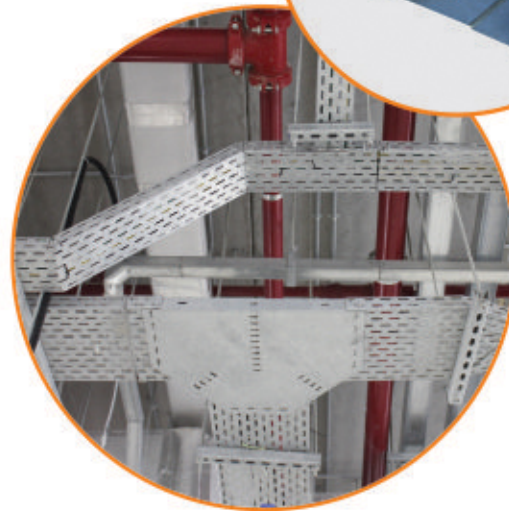
Finish : Hot Dip Galvanized, Pre-Galvanized, Powder Coated, Stainless Steel 304, Stainless Steel 316(Self & Mirror).

Width (mm)	Height (mm)	Thickness (mm)	Length (mm)
100	35/50/80	1 / 1.2	3000
150	35/50/80	1 / 1.2 / 1.5	
200	35/50/80	1.2 / 1.5	
300	35/50/80	1.2 / 1.5	
400	35/50/80	1.5	
500	35/50/80	1.5	
600	35/50/80	1.5	



Features :

- Maximizes ventilation
- Easy Installation
- Less Accessories for Joints
- Corrosion Resistance
- Rigid Structure
- High Capacity
- High Strength
- Superior quality
- Precisely Designed with cover and without cover
- Suitable for all applications and environments including marine environments and chemical processing factories.



Strength	Light , Medium & Heavy Duty
Raw Material	Mild Steel, Pre-Galvanized, Stainless Steel 304, Stainless Steel 316

Note : Above all sizes are standard, Tailor-made sizes can be manufactured

LADDER TYPE CABLE TRAY & ACCESSORIES

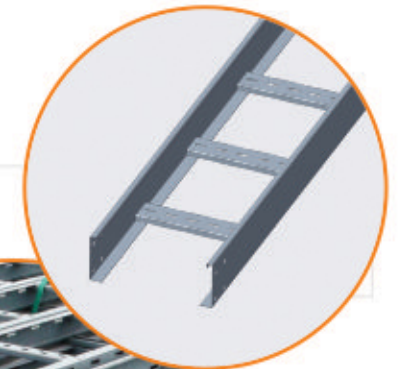
Owing to our state-of-art manufacturing unit and the usage of leading-edge technology, we are able to present a comprehensive range of Straight Run Ladder Cable Tray that is used in various industries. We offers ladder cable tray with complete accessories for smooth and fast installation. Keeping in mind the latest market development, this cable tray is manufactured by our talented professionals employing optimum quality raw material and advanced tools. Besides this, our quality experts test this cable tray to ensure its quality. We manufacture ladder cable tray in different material as required by the customer.

Product Range :

Thickness : 1.5 mm and 2 mm.

Finish : Hot Dip Galvanized , Powder Coated , Stainless Steel 304, Stainless Steel 316(Self & Mirror).

Width (mm)	Height (mm)	Length (mm)
100	50/75/100	3000
150	50/75/100	
200	50/75/100	
300	50/75/100	
400	50/75/100	
500	50/75/100	
600	50/75/100	
700	50/75/100	
800	50/75/100	
900	50/75/100	



Features :

- Maximizes ventilation
- Rugged Construction
- Precisely Designed
- High strength
- Superior quality
- Suitable for all applications and environments including marine environments and chemical processing factories.



Strength	Light , Medium & Heavy Duty
Raw Material	Mild Steel , Stainless Steel 304 , Stainless Steel 316.

Note : Above all sizes are standard , Tailor-made sizes can be manufactured.

WIRE MESH CABLE TRAY & ACCESSORIES

Creating a niche of Wire Mesh Cable Tray and Cable Tray Accessories at its best, with utmost quality.

Riding on unfathomable volumes of industrial expertise, we are offering an excellent range of Wire Mesh Cable Ducts & Accessories with utmost quality. Commonly used for Telecoms, IT, Food Industries & Other Industrial Control cable managements. we assure our clients that our provided ducts are the best in quality. Our adept professionals only utilize premium quality raw material, while manufacturing these ducts. Apart from this, our offered ducts can be availed in several dimensions, as per the requirements of our esteemed clients.

Product Range :

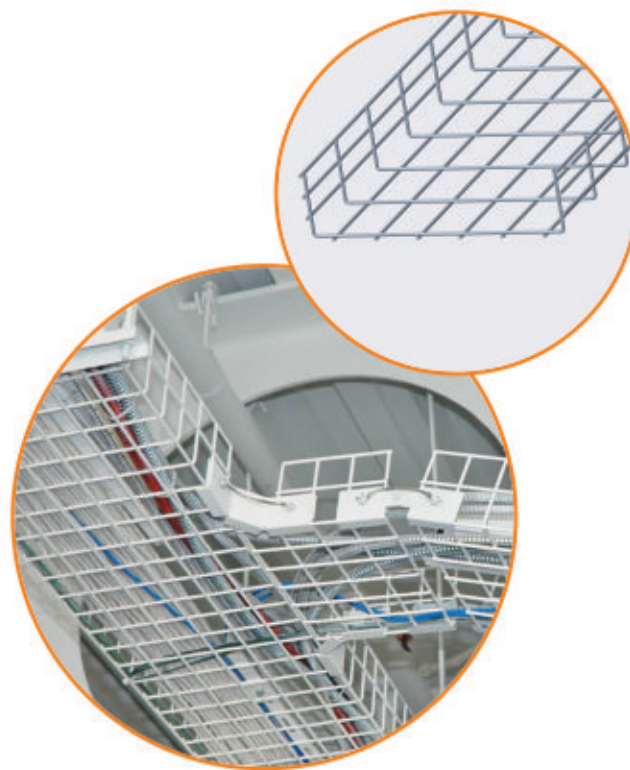
Wire Size : 3 mm to 5 mm diameter.

Finish : Hot Dip Galvanized , Powder Coated , Stainless Steel.

Width (mm)	Height (mm)	Length (mm)
50	50/75/100	3000
100	50/75/100	
150	50/75/100	
200	50/75/100	
300	50/75/100	
400	50/75/100	
500	50/75/100	
600	50/75/100	

Features :

- Fastest system to install
- Flawless Finish
- Open structure maximizes ventilation, decreases collection of debris, and simplifies maintenance work.
- Features a unique, patented safety edge to prevent injuries and damage to cable sheathing.
- Suitable for all applications and environments including marine environments and food processing factories.



Strength	Light , Medium & Heavy Duty
Raw Material	Mild Steel , Stainless Steel

Note : Above all sizes are standard, Tailor-made sizes can be manufactured

LIGHTING POLE & ACCESSORIES

Whether you are looking for a wide selection of commercial poles: Octagonal Poles, Swaged and High- Mast. The Jetcotech Is committed to meeting your needs and being your supplier of choice.

The versatility of Jetcotech poles allows Architects, Engineers and Design professionals to use these poles for a wide range of Commercial, Residential, Municipal and Industrial applications. The durability and strength of the product, along with its light weight and maintenance free construction.

Octagonal Poles :

Jetcotech poles offered hot dip galvanized Octagonal poles as per IS standards with average coating thickness of 80 – 100 micron.

We offered 6, 8, 10, 12 meter pole height with 3 mm thickness of sheet, Galvanized mounting bracket are supplied along with the octagonal poles for installation of luminaries. The Octagonal poles are bolted on pre-cast foundation with a foundation bolts for greater rigidity.

Features :

- Zero maintenance – insect infestation or pole rot
- Weighs 50-70% less than comparable concrete structures
- Custom designs – made to customer's exact specifications
- Lasts Longer – steel poles can last as long as 85 years with no shrinkage
- Fully recyclable and non-toxic
- Custom finished to your specification



Note : Above all sizes are standard , Tailor-made sizes can be manufactured.

LIGHTING POLE & ACCESSORIES

Jetcotech team of veterans in the steel pole business utilizes their individual and collective experience and knowledge along with plant and equipment to effectively complete any job within a customer's deadline, no matter what the design challenge.

Swaged Poles :

Jetcotech manufactures all kinds of poles at its well equipped plant which features machinery like Hydraulic Swaging machines, Straightening and Welding Machines and has facilities to produce swaged poles **6, 8, 10, 12 meter** & various **thickness 2, 2.5, 3 mm** as per customer requirements. Customization is also done as per a customer's specifications.

Jetcotech Swaged pole include Light Poles in single, double, three & four hang, Street light Poles, Traffic Light Poles etc.

Features :

- Zero maintenance – insect infestation or pole rot
- Weighs 50-70% less than comparable concrete structures
- Custom designs – made to customer's exact specifications
- Lasts Longer – steel poles can last as long as 85 years with no shrinkage
- Fully recyclable and non-toxic
- Custom finished to your specification



Note : Above all sizes are standard , Tailor-made sizes can be manufactured.

HIGH MAST & FLAG MAST ACCESSORIES

High mast lighting is today's preferred over conventional lighting. Especially where large areas are to be illuminated. This system eliminates the need for numerous lighting columns which, under certain circumstances, can pose hazardous to movement. This is possible because the high mast lighting system achieves very large space to height ratios.

High-mast lighting is ideal for industrial or Commercial areas, Docks, Airports, Flyovers, Stations, Car Parking and even some hazardous areas. All of these require the best possible lighting with minimum interference from the installation itself combined with ease of maintenance.

Height (Meter)	Section	Thickness	Finish
12	1	3 mm	Hot Dip Galvanized
16	2	Bottom 4mm / Top 3mm	
20	2	Bottom 4mm / Top 3mm	
25	3	Bottom 4mm / Middle 4mm / Top 4 mm	

Jetcotech high mast is provided with accessories as per customer requirements. Generally these include a raising and lowering system, trailing cable, power tool, feeder pillar for automatic switching operation of luminaries.

Flag Mast :

Jetcotech is provided flag mast with 12, 16, 20, 25 meter height with accessories as per customer requirements. Jetcotech Flag mast ideal for National, Holy and Industrial flag hoisting.

We provide Flag mast as per customize design and with Hot dip galvanized finished.

GI Earthing Material :

- GI Earthing plate
- GI Earthing wire
- GI Earthing stripe
- GI Earthing rode

Note : Above all sizes are standard, Tailor-made sizes can be manufactured



HOT DIP GALVANIZING

As a full-service coatings company, Jetcotech provides quality surface finishes that extend the service life and improve the appearance of metal products throughout the country. In fact, Jetcotech is one of the largest custom galvanizers in West Gujarat. Our processes and transportation capacities are designed to efficiently handle steel products of all shapes and sizes, for customers anywhere in the country. Through continuous innovation, Jetcotech has also developed quality processes for Galvanizing.

The depth and breadth of our coatings services makes Jetcotech a one-stop solution for all of your galvanizing and coatings needs. From the largest steel structures to the smallest parts, our galvanizing facilities provide end to end service.

Further, our strategically located galvanizing plants build off of each other's strengths to provide the right solution for every project, at the best price. So, you can depend on Jetcotech to deliver a high quality finished product, on time, through service that is meticulous and seamless.

The combined capabilities of our state-of-the-art plants provide Jetcotech with the capacity to galvanize projects of any size, quickly and efficiently.

Jetcotech provides quick turnaround and on-time deliveries for every project. Because of our quick response times, Jetcotech takes up less of a project's overall timeline, thus allowing fabricators more leeway in their production schedules. At Jetcotech, we promise to serve our customers with superior service, impeccable quality and on-time delivery at the best value.

