



JETCOTECH
ENGINEERING



An
**Innovative
Trendsetter**

A Trusted Place For
Faith of Quality

Profile

JETCOTECH is a Manufacturer, Supplier & Exporter with a dominant presence in Cable Trays, Lighting Poles, High mast Pole, Earthing Solutions, Solar Structures & Hot Dip Galvanizing. Led by JETCO group, the company's enviable success story has been scripted essentially by its resolve to innovate, set new standards, enhance capabilities, enrich lives and to ensure that it stays true to its cherished value system.

Jetcotech is trying build up our company on the rock of faith in today's competitive market. We cordially expect your kind co-operation in achieving our milestone. We dedicate ourselves in supplying wide range of Products from one stop.

Our main target is to catering best quality products to our esteemed customers in the field of Industrial, Infra and commercial by way of providing solutions in Cable Management. We are fired up by the passion to push the limits of Engineering Products like, Cable trays, Lighting Poles, Mast Poles and Galvanizing of any type of metals. Our technical team consists of trained & motivated engineers & technician to cater all sorts of before & after sales backup.

Jetcotech is with a culture of excellence and orientation toward s growth, the company is positioned to win the future. Jetcotech is proactive, progressive and has been steadily improving its competitive advantage.

We are well known in the market with our existing business of Electrical Panels Manufacturing with 100% in house facilities knows as JETCO INDUSTRIES since 2009.



SAFE

Environment, Health and Safety Issues are priority areas at Jetcotech. In keeping with pollution control and carbon emission standards we have taken up appropriate initiatives and are pursuing alternatives to implement a green policy.



STRENGTH

Jetcotech will try to meet the divergent needs of clients & delight them by systematically supplying a rapid response to their need. The above shall be achieved by launching a Quality Management Systems through participation of our entire team & vendors. It shall be our endeavor to continually improve the quality of our services and products to match the best & latest in the industry & infra.



SPEED

Each phase of design, fabrication and delivery is planned and seamlessly carried out to ensure that customers receive the highest quality products.

To ensure that Jetcotech products reach you on time strategically located Jetcotech regional distribution centers delivery to every state and job site in the subcontinent, quickly and efficiently.



RANGE OF LIGHTING POLE

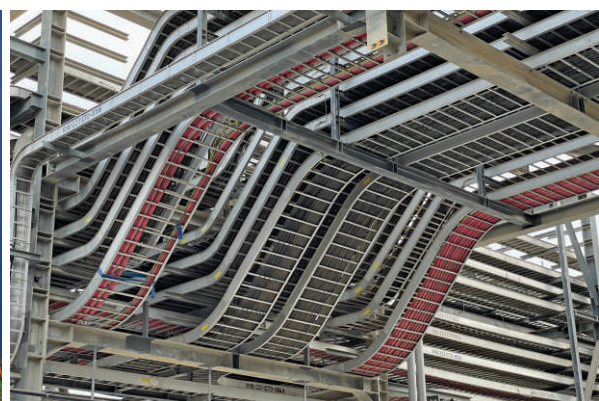
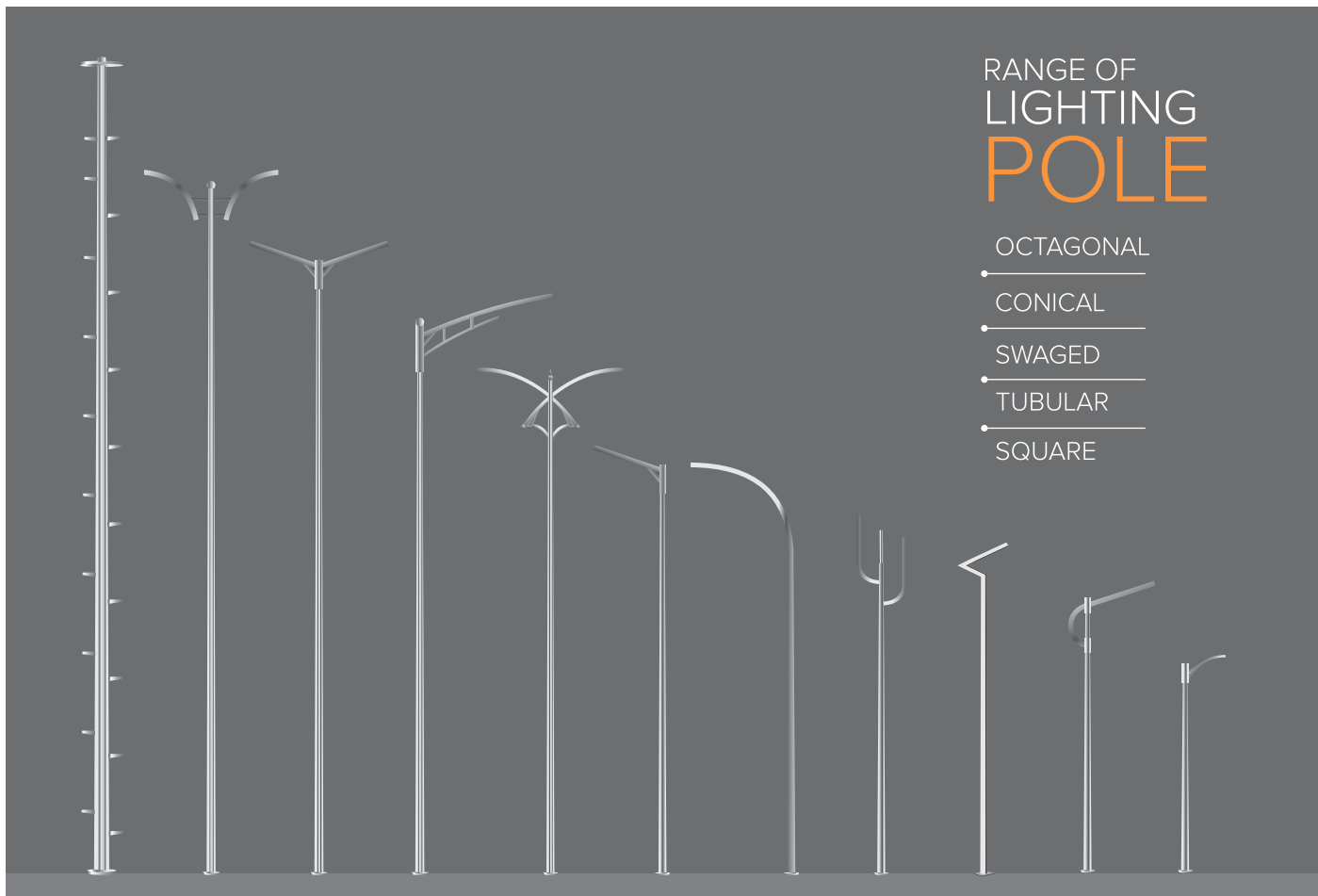
OCTAGONAL

CONICAL

SWAGED

TUBULAR

SQUARE



TOTAL
**ELECTRICAL PANEL
SOLUTION**
FOR ANY
APPLICATION

www.jetcoindustries.in



ALL KIND OF
**CABLE MANAGEMENT &
LIGHTING / MAST POLE**
MANUFACTURER, SUPPLIER
& EXPORTER

www.jetcotech.in



JETCO OVERSEAS EXPORTS
COMPLETE SOURCING
SOLUTIONS TO
**BUILDING AND
INDUSTRIAL PROJECT
MATERIALS** TO ACROSS
THE GLOBE

www.jetcooverseas.com

The Innovative PRODUCT RANGE



LIGHTING POLE

Octagonal | Conical | Swaged
Square | Tubular | Decorative

High Mast | Stadium Mast
Flag Mast | Signage Mast | Mono Pole

MAST POLE



CABLE TRAY

Perforated | Ladder | Wiremesh
Raceway | Embossed Cable Tray

Earthing Material | LED Lights
Hotdip Galvanised Service | Solar Structure



Our Valuable Clients



Its make JETCO — more powerful.



JETCOTECH ENGINEERING LLP

Opp. Old Pipli Bus-Station, Jetpar Road,
Morbi-363642, Gujarat, India

m | +91 75750 07163

e | sales@jetcotech.in

 www.jetcotech.in