



JETCOTECH
ENGINEERING



An
**Innovative
Trendsetter**

A Trusted Place For
Faith of Quality

Profile

JETCOTECH is a Manufacturer, Supplier & Exporter with a dominant presence in Cable Trays, Lighting Poles, High mast Pole, Earthing Solutions, Solar Structures & Hot Dip Galvanizing. Led by JETCO group, the company's enviable success story has been scripted essentially by its resolve to innovate, set new standards, enhance capabilities, enrich lives and to ensure that it stays true to its cherished value system.

Jetcotech is trying build up our company on the rock of faith in today's competitive market. We cordially expect your kind co-operation in achieving our milestone. We dedicate ourselves in supplying wide range of Products from one stop.

Our main target is to catering best quality products to our esteemed customers in the field of Industrial, Infra and commercial by way of providing solutions in Cable Management. We are fired up by the passion to push the limits of Engineering Products like, Cable trays, Lighting Poles, Mast Poles and Galvanizing of any type of metals. Our technical team consists of trained & motivated engineers & technician to cater all sorts of before & after sales backup.

Jetcotech is with a culture of excellence and orientation toward s growth, the company is positioned to win the future. Jetcotech is proactive, progressive and has been steadily improving its competitive advantage.

We are well known in the market with our existing business of Electrical Panels Manufacturing with 100% in house facilities knows as JETCO INDUSTRIES since 2009.



SAFE

Environment, Health and Safety Issues are priority areas at Jetcotech. In keeping with pollution control and carbon emission standards we have taken up appropriate initiatives and are pursuing alternatives to implement a green policy.



STRENGTH

Jetcotech will try to meet the divergent needs of clients & delight them by systematically supplying a rapid response to their need. The above shall be achieved by launching a Quality Management Systems through participation of our entire team & vendors. It shall be our endeavor to continually improve the quality of our services and products to match the best & latest in the industry & infra.



SPEED

Each phase of design, fabrication and delivery is planned and seamlessly carried out to ensure that customers receive the highest quality products.

To ensure that Jetcotech products reach you on time strategically located Jetcotech regional distribution centers delivery to every state and job site in the subcontinent, quickly and efficiently.



RANGE OF LIGHTING POLE

OCTAGONAL

CONICAL

SWAGED

TUBULAR

SQUARE



TOTAL
**ELECTRICAL PANEL
SOLUTION**
FOR ANY
APPLICATION

www.jetcoindustries.in



ALL KIND OF
**CABLE MANAGEMENT &
LIGHTING / MAST POLE**
MANUFACTURER, SUPPLIER
& EXPORTER

www.jetcotech.in



JETCO OVERSEAS EXPORTS
COMPLETE SOURCING
SOLUTIONS TO
**BUILDING AND
INDUSTRIAL PROJECT
MATERIALS** TO ACROSS
THE GLOBE

www.jetcooverseas.com

The Innovative PRODUCT RANGE



LIGHTING POLE

Octagonal | Conical | Swaged
Square | Tubular | Decorative

High Mast | Stadium Mast
Flag Mast | Signage Mast | Mono Pole

MAST POLE



CABLE TRAY

Perforated | Ladder | Wiremesh
Raceway | Embossed Cable Tray

Earthing Material | LED Lights

Hotdip Galvanised Service | Solar Structure

Jetcotech designs and manufactures a wide range of octagonal poles, for primary use as street lighting poles. Products are fabricated using premium quality raw material and manufacture standard size & customized to client's specification. Jetcotech octagonal poles come with large range of brackets solution for lights fittings & provide solution with ladder and platform also for maintenance purpose.

OCTAGONAL POLE

Jetcotech uses high-strength sheet steel as per IS standards and can produce single-piece poles up to a length of 13 meters. The two shell halves are welded together with advanced systems and with automatic SAW Welding Machin. The octagonal poles shafts are continuously tapered with single longitudinal welding & no circumferential weld. The manufacturing facilities available allows production of single section of length up to 13 meters, which can be galvanized through hot dip process at the company's in-house sophisticated galvanizing facilities as per IS, and guarantees great corrosion resistance.



Product Code.	Height Mtr.	Top A/F(mm)	Bottom A/F(mm)	Thickness (mm)	Base Plate			Foundation Bolt
					Size	Thick.	PCD	
JEOP301	3	60	130	3	200X200	12	200	M16 X 400 mm
JEOP302	3	70	130	3	200X200	12	200	M16 X 400 mm
JEOP401	4	60	130	3	200X200	12	200	M16 X 400 mm
JEOP402	4	70	130	3	200X200	12	200	M16 X 400 mm
JEOP501	5	60	130	3	200X200	12	200	M16 X 500 mm
JEOP502	5	70	130	3	200X200	12	200	M16 X 500 mm
JEOP601	6	60	130	3	220X220	12	220	M16 X 500 mm
JEOP602	6	70	135	3	220X220	12	220	M16 X 500 mm
JEOP701	7	60	130	3	220X220	12	220	M16 X 500 mm
JEOP702	7	70	135	3	220X220	12	220	M16 X 500 mm
JEOP801	8	70	135	3	225X225	16	220	M20 X 600 mm
JEOP802	8	70	155	3	225X225	16	220	M20 X 600 mm
JEOP901	9	70	155	3	260X260	16	250	M24 X 600 mm
JEOP902	9	70	175	3	260X260	16	250	M24 X 600 mm
JEOP1001	10	70	155	3	260X260	16	250	M24 X 600 mm
JEOP1002	10	70	175	3	275X275	16	275	M24 X 600 mm
JEOP1101	11	90	210	3	300X300	20	300	M24 X 700 mm
JEOP1201	12	90	210	3	300X300	20	300	M24 X 700 mm

Thickness : Customised Thickness Available as per Requirements

Finished : Hot Dip Galvanized (As per IS), PU Painted, Powder Coated

Note : Above all sizes are standard, Tailor-made sizes can be manufactured

In Jetcotech's extensive range of products, we also offer our esteemed clients a broad array of Conical Poles. These poles are manufactured using quality assured steel that is procured from trusted vendors of the market with the help of latest technology. Further, these Conical Poles are available in various specifications as per our client's requirements with utmost quality.

Conical poles are also continuously tapered poles with circular cross section at both the ends. These are manufactured by press forming sheets under press brakes. Unlike polygonal cross section poles, conical poles give a much better and smoother appearance. They are mainly used for lighting, traffic light & CCTV applications on highways, streets, residential complexes, parks etc.

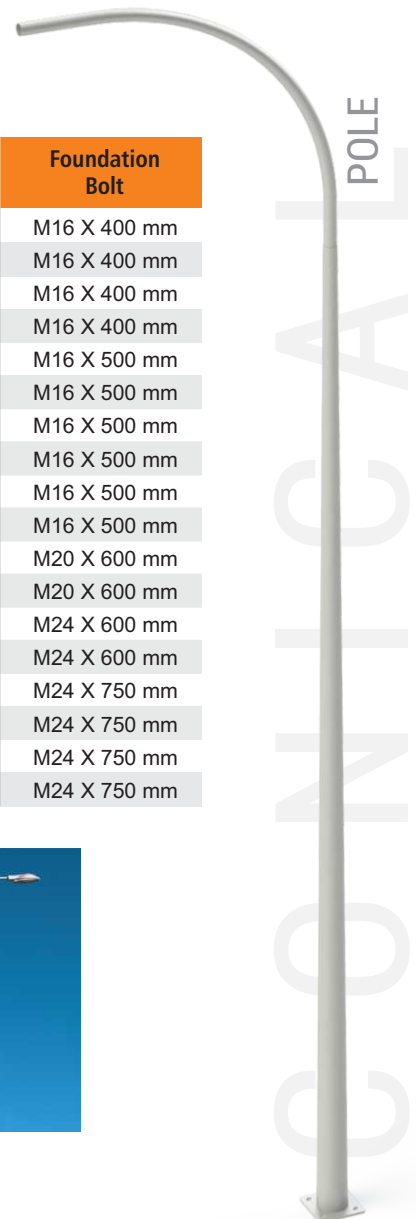
CONICAL POLE

Product Code.	Height Mtr.	Top A/F(mm)	Bottom A/F(mm)	Thickness (mm)	Base Plate			Foundation Bolt
					Size	Thick.	PCD	
JECP301	3	65	110	3	200X200	12	200	M16 X 400 mm
JECP302	3	70	115	3	200X200	12	200	M16 X 400 mm
JECP401	4	65	125	3	200X200	12	200	M16 X 400 mm
JECP402	4	70	130	3	200X200	12	200	M16 X 400 mm
JECP501	5	65	140	3	225X225	12	225	M16 X 500 mm
JECP502	5	70	145	3	225X225	12	225	M16 X 500 mm
JECP601	6	65	155	3	250X250	12	250	M16 X 500 mm
JECP602	6	70	160	3	250X250	12	250	M16 X 500 mm
JECP701	7	65	170	3	250X250	16	250	M16 X 500 mm
JECP702	7	70	175	3	250X250	16	250	M16 X 500 mm
JECP801	8	65	185	3	275X275	16	275	M20 X 600 mm
JECP802	8	70	190	3	275X275	16	275	M20 X 600 mm
JECP901	9	65	200	3	300X300	20	300	M24 X 600 mm
JECP902	9	70	205	3	300X300	20	300	M24 X 600 mm
JECP1001	10	70	220	3	320X320	20	320	M24 X 750 mm
JECP1002	10	80	230	3	320X320	20	320	M24 X 750 mm
JECP1101	11	70	235	3	320X320	20	320	M24 X 750 mm
JECP1201	12	70	250	3	350X350	20	350	M24 X 750 mm



- Thickness :** Customised Thickness Available as per Requirements
- Finished :** Hot Dip Galvanized (As per IS), PU Painted, Powder Coated

Note : Above all sizes are standard, Tailor-made sizes can be manufactured



HIGH MAST POLE & ACCESSORIES

High mast lighting is preferred over conventional lighting this day. Especially where large areas are to be illuminated. This system eliminates the need for numerous lighting columns which, under certain circumstances, can pose hazardous to movement. This is possible because the high mast lighting system achieves very large space to height ratios.

High-mast lighting is ideal for industrial or commercial areas, docks, airports, flyovers, stations, car parks and even some hazardous areas. All of these require the best possible lighting with minimum interference from the installation itself combined with ease of maintenance.

Jetcotech high mast is provided with accessories as per customer requirements. Generally, these include a raising and lowering system, trailing cable, power tool, feeder pillar for automatic switching operation of luminaries, lighting finial, and aviation obstruction warning light.



Code	Height	Bottom	Top	Sheet Thickness			Base Plate-PCD	Foundation Bolts			Luminary Capacity
				T	M	B		Dia	Length	Qty.	
JEHM1201	12	360	150		3		520x20-445	M24*700X6			4, 6, 8
JEHM1202	12	360	105		3		520x20-445	M24*700X6			4, 6, 8
JEHM1203	12	310	105	3		3	445x20-380	M24*700X6			4, 6, 8
JEHM1204	12	360	150	3		3	520x20-445	M24*700X6			4, 6, 8
JEHM1205	12	360	105	3		3	520x20-445	M24*700X6			4, 6, 8
JEHM1251	12.5	360	150	3		3	520x25-445	M24*700X6			4, 6, 8
JEHM1252	12.5	360	105	3		3	520x25-445	M24*700X6			4, 6, 8
JEHM1601	16	360	150	3		3	520x25-445	M30*850X8			4, 6, 8, 10
JEHM1602	16	410	150	3		3	630x25-530	M30*850X8			4, 6, 8, 10
JEHM1603	16	410	150	3		4	630x25-530	M30*850X8			4, 6, 8, 11
JEHM1604	16	460	150	3		4	670x25-580	M30*850X8			4, 6, 8, 10
JEHM2001	20	410	150	3		4	630x30-580	M30*850X8			6, 8, 10, 12
JEHM2002	20	460	150	3		3	670x30-580	M30*850X8			6, 8, 10, 12
JEHM2003	20	460	150	3		4	670x30-580	M30*850X8			6, 8, 10, 12
JEHM2501	25	460	150	3	4	5	670x30-580	M30*1000X12			6, 8, 10, 12
JEHM2502	25	540	150	3	4	5	730x30-650	M30*1000X12			6, 8, 10, 12
JEHM2503	25	540	150	4	4	5	730x30-650	M30*1000X12			6, 8, 10, 12
JEHM3001	30	540	150	3	4	5	750x30-650	M30*1000X12			8, 10, 12, 16
JEHM3002	30	540	150	4	4	5	750x30-650	M30*1000X12			8, 10, 12, 16
JEHM3003	30	610	200	3	4	5	840x30-740	M30*1000X12			8, 10, 12, 16, 20
JEHM3004	30	610	200	4	4	5	840x30-740	M30*1000X12			8, 10, 12, 16, 20, 24
JEHM3005	30	610	200	4	5	6	840x30-740	M30*1000X12			8, 10, 12, 16, 20, 24
JEHM4001	40	740	200	4	5-6	8	950x40-850	M30*1000X16			10, 12, 16, 20, 24

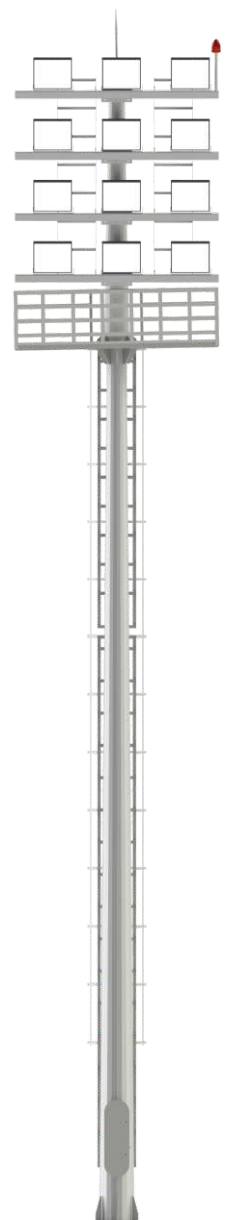


We at Jetcotech offer Flag Mast Pole under mast pole range. A Flag Mast from Jetcotech is engineered and manufactured by dedicated design team to fulfill customer requirements, a dedicated technical team for R & D as well as maintaining high quality of products. We are a reliable organization engaged in manufacturing a qualitative range of poles. Flag Mast Pole Uses for National Flag, Holly Flag & Organization Flag.



Code	Height	Bottom A/F	Top	Sheet Thickness			Base Plate-PCD	Foundation Bolts		
				T	M	B		Dia	Length	Qty.
JEFM1801	18	460	150	3		4	670x30-580	M30*850X8		
JEFM2001	20	460	150	3		4	670x30-580	M30*850X8		
JEFM2501	25	540	150	3	4	5	730X30-650	M30*1000X12		
JEFM3001	30	540	200	3	4	5	750X30-650	M30*1000X12		
JEFM3501	35	610	150	3	4-5	6	850X30-750	M30*1000X16		
JEFM4001	40	740	200	4	5-6	8	950x40-850	M30*1000X16		

FLAG MAST POLE & ACCESSORIES



STADIUM MAST POLE & ACCESSORIES

We at Jetcotech manufacture and supply Mast Pole for Stadium Lighting. We supply stadium mast with ladder and platform arrangements or R&L trolley system for maintenance purpose. We offer stadium mast with customized specification as per client's requirements. "our motto is lighting your sport and bright future"

Code	Height	Bottom A/F	Top	Sheet Thickness			Base Plate-PCD	Foundation Bolts			Luminary Capacity
				T	M	B		Dia	Length	Qty.	
JESM1501	15	460	150	3	3	3	670X25-580	M30*850X8			12, 24
JESM1601	16	460	150	3	3	4	670X25-580	M30*850X8			12, 24
JESM2001	20	460	150	3	4	4	670X30-580	M30*850X8			12, 24
JESM2501	25	540	150	3	4-4	5	750X30-650	M30*1000X12			12, 24, 48
JESM2502	25	610	200	4	4-5	6	830X30-730	M30*1000X12			24, 48
JESM3001	30	540	150	4	4-5	6	820X30-680	M30*1000X12			24, 48
JESM3002	30	610	200	4	5-6	6	830X40-730	M30*1000X16			24, 48



Note : Above all sizes are standard, Tailor-made sizes can be manufactured



Our Valuable Clients



Its make **JETCO** — more powerful.



JETCOTECH ENGINEERING LLP

Opp. Old Pipli Bus-Station, Jetpar Road,
Morbi-363642, Gujarat, India

m | +91 75750 07163

e | sales@jetcotech.in

 www.jetcotech.in